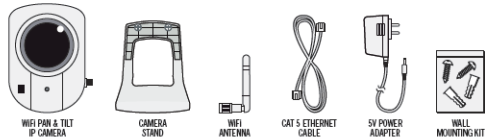




# MyVirtual Network

## Pan & Tilt IP Camera Installation Guide

### YOUR PACKAGE CONTAINS THE FOLLOWING ITEMS:



### STEP 1

#### LOGIN:

- Login to your Remote Access Account  
Enter your unique **User ID** and **Password**



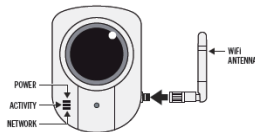
**NOTE:** To install with a laptop you must be connected directly (using an Ethernet cable) from your laptop to your router. After you have registered your Gateway Controller successfully, camera(s) and device(s) you can disconnect the Ethernet cable.

### PROCEED TO STEP 2!

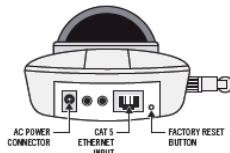
### STEP 2

#### HARDWARE INSTALLATION:

(Attach White Antenna – 1<sup>st</sup>)

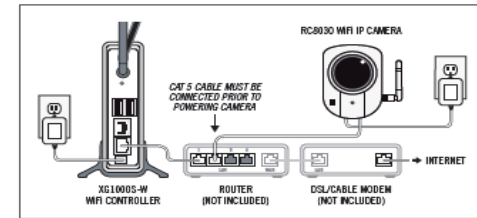


- Then, **plug** one end of the supplied **Ethernet Cable** (Gray Wire) into the Ethernet Input on the bottom base of the camera and the other end into an available free port on your **Network Router**



- Plug the camera's **Power Adapter** into the **AC Power Connector** and then plug it into an electrical outlet. The power and network lights on the front of the camera should be illuminated.

**NOTE:** Camera Discovery must take place with your camera wired to your router. This is to connect the camera to your Gateway Controller network. After Discovery you can disconnect your camera from the router and place the camera anywhere you would like in your apartment, home or business for wireless remote access.



SET-UP SHOULD NOW LOOK LIKE THE IMAGE ABOVE

**DO NOT DISCONNECT THE CAMERA FROM THE ROUTER OR POWER UNTIL INSTRUCTED**

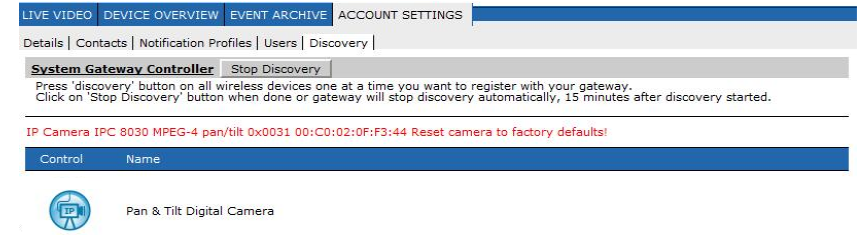
### STEP 3

#### DISCOVER CAMERA(S):

- Click on the **'CONTINUE WITH DEVICE DISCOVERY'** link.

The Discovery process should start automatically. If you don't see a message that DISCOVERY IS INITIALIZING or IN PROGRESS, press the **'START DISCOVERY'** button to start the Discovery process.

After the message changes to 'DISCOVERY IN PROGRESS...' your Camera(s) will automatically be discovered by your Controller - **Please be patient.**



You Should See The Following Message:

**"IP Camera IPC 8030 MPEG-4 pan/tilt...Reset camera to factory defaults!"**

- Press the **"FACTORY RESET BUTTON"** on the bottom base of the camera with a pointy object – **hold in for 60 seconds!**
- Release....immediately after 60 seconds!**
- You will know when the camera has been reset when the (3) LED lights on the front of the camera blink **GREEN (Power, Activity, Network)**, powers down and reboots!

*"With the Pan/Tilt camera the camera will go through a Pan/Tilt cycle."*

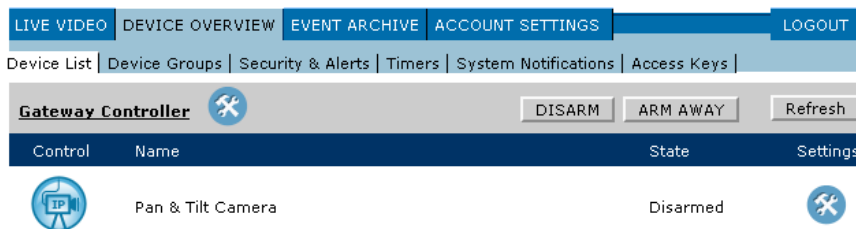
- Click on **"STOP DISCOVERY"**
  - Your camera should appear discovered (*see image below*)



- Remove the **Ethernet cable** from the camera and **Unplug** the power adapter from the electrical outlet.
- Place the camera anywhere you would like to monitor in your apartment, home or business.
- Plug the **Power Adapter** into any electrical outlet and wait **10 minutes** for the camera to cycle to wireless mode **and come back online**.

**CLICK ON:**

**'DEVICE OVERVIEW'** to view your Camera (see image below)\*\*



**\*\*To add additional Wireless Camera's to your System Repeat STEP (3)**



**HELPFUL TIPS:**

**Discovering Additional Device(s)?**



**CLICK ON:**

- 'ACCOUNT SETTINGS'**
- 'DISCOVERY'**
- 'START DISCOVERY'**



**Want to Name Your Camera(s) & Device(s)?**

- You can name your Camera(s) & Devices by clicking on the Tool Kit in the **"DEVICE OVERVIEW"** Screen:



## Password Help

Once logged into your account, navigate to the **'ACCOUNT SETTINGS'**, then go to the **General Settings Box**, and input your new password in the appropriate two fields. When complete click on the **'SUBMIT'** button



Click **FAQ? SYSTEM INFO** on our website where you can download **User Manuals** that include information on **Using Your Remote Monitoring System, Remote Monitoring System Features, Device Discovery**, and Answer's to General Questions about MyVirtual Network. **Enjoy your system!**

**FOR ASSISTANCE- PLEASE CALL:**

**Tel: 1.800.520.6986**