



Gateway Controller Quick & Easy Setup

GATEWAY CONTROLLER – (3) EASY STEPS!

(1) INSTALL THE GATEWAY CONTROLLER

- Connect the **Gateway Controller** to a free port on the back of your **multi-port router** with the supplied **Ethernet Cable (gray)**
- Plug in the **AC Power Adapter (black)** to the back of the controller then to an electrical outlet.

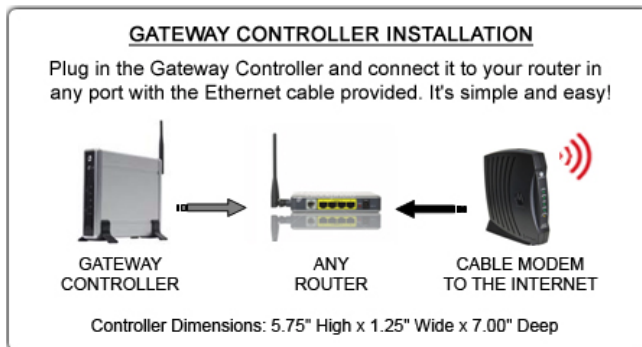
**The Gateway Controller will automatically power up.*

Please wait a few minutes until you see the following lights:

- **LINK** : Steady **GREEN**
- **ACT**: Blinking **GREEN**
- **REM**: Steady **RED**
- **STAT**: Steady **RED**
- **ACT**: Steady **GREEN**



CONNECTION SHOULD LOOK LIKE THIS:



NOTE: To install with a laptop you must be connected directly (using an Ethernet cable) from your laptop to your router. After you have registered your **Gateway Controller** successfully, camera(s) and devices(s) you can disconnect the Ethernet cable.

Our System is a Stand Alone System and Does Not Require a computer Connected or Running after Installation!

(2) LOGIN

- Using your Desktop or Laptop that is **connected directly** to your router, type into your web browser the following URL:
<https://www.myremotemanager.com/myvn>

Enter your the unique User ID and Temporary Password in the proper fields and log in to your account.

WELCOME TO MYVIRTUAL NETWORK

To log in, please provide your User ID and Password below.

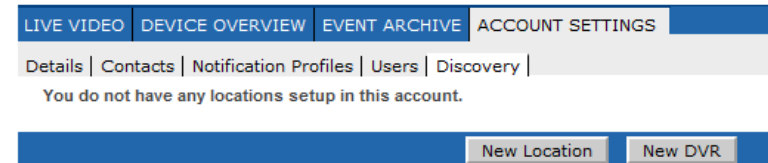
USER ID:

PASSWORD:

Forgot Your Password?

(3) GATEWAY CONTROLLER DISCOVERY AND REGISTRATION

- After you have logged into your account, navigate to:
 - 'ACCOUNT SETTINGS' click on



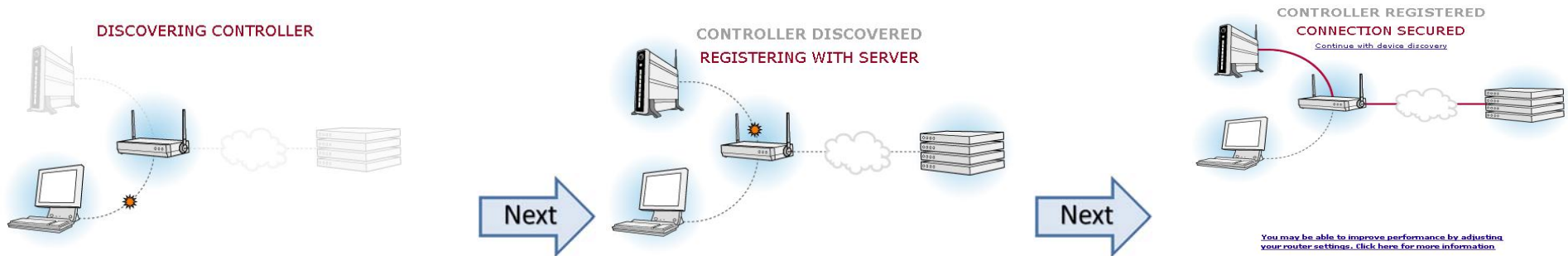
- 'DISCOVERY' and click on,

- New Location Button and click to discover and register your Gateway Controller to your account.

A JAVA™ applet will be started that will allow your web browser to locate your Gateway Controller on your network and register the unit to your account.

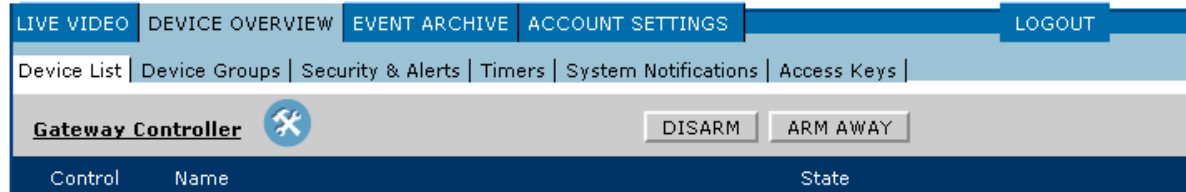
PLEASE NOTE: To complete this process the Controller Registration Wizard may prompt you to download this plug-in if you do not have it.

- After the JAVA applet has started you should see a message that the Wizard is **DISCOVERING CONTROLLER**.



(A) Click on the '**CONTINUE WITH DEVICE DISCOVERY**' link.

- When the Registration and Discovery of your Gateway Controller is completed this will appear on your '**DEVICE OVERVIEW**' Screen



SET-UP COMPLETE!

- You can now continue to discover the **Wireless Camera(s)** and **Device(s)** that you would like to add to your system

Click **FAQ? SYSTEM INFO** on our website where you can download **User Manuals** that include information on **Using Your Remote Monitoring System**, **Remote Monitoring System Features**, **Device Discovery**, and Answer's to General Questions about MyVirtual Network. **Enjoy your system!**

Copyright©2010 MyVirtual Network. All rights reserved.