

QUICK & EASY SETUP GUIDE

PLEASE FOLLOW THESE SIMPLE STEPS

(1) Plug the Gateway Wireless USB Adapter into the back of the Gateway Controller

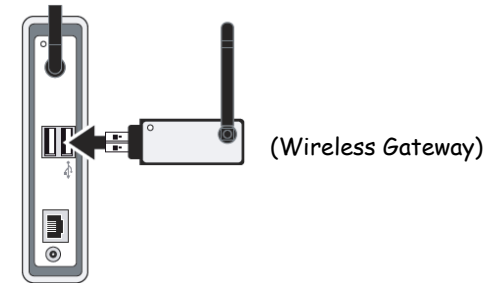
(2) Hardware Installation

- Connect the **Gateway Controller** to a free port on the back of your **multi-port router** with the supplied **Ethernet Cable (gray)**
- Plug in the **AC Power Adapter (black)** to the back of the controller then to an electrical outlet.

The Gateway Controller will automatically power up.

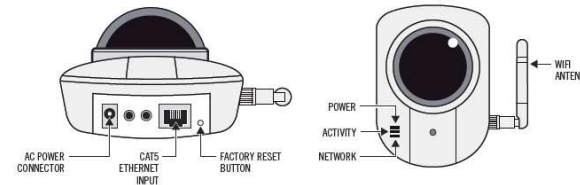
(1) Wireless USB Port

(2) Ethernet Cable Port

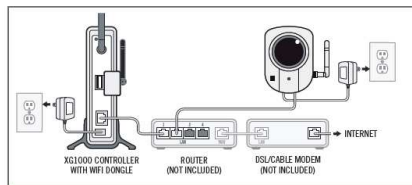


(3) Discovery of Wireless Pan/Tilt And Fixed Position Color Indoor Cameras

- Plug the **Ethernet Cable** supplied with the camera into the camera **Ethernet Input** and the other end into another free port on the back of your **ROUTER**. Plug the camera AC Power Adapter into the **AC Power Connector** and plug into an electrical outlet.



NOTE: Camera Discovery must take place with your camera wired to your router. This is to connect the camera to your Gateway Controller network. After Discovery you can disconnect your camera from the router and place the camera anywhere you would like in your apartment, home or business for wireless remote access.



DO NOT DISCONNECT THE CAMERA FROM THE ROUTER OR POWER UNTIL INSTRUCTED
(STEP # 7)

- Press the "**FACTORY RESET BUTTON**" on the camera. You will know when the camera has reset the (3) LED's on the front of the camera blink (**Power, Activity, Network**). With the Pan/Tilt camera the camera will go through a Pan/Tilt cycle.

(4) Login

- Using your PC or Lap Top that is **connected directly** to your router, type into your web browser the following URL:

<https://www.myremotemanager.com/myvn/>



NOTE: To Install with a Lap Top you must be hardwired with an Ethernet cable from your Lap Top to your Router. After **Hardware Installation and Controller Registration** you can disconnect the Ethernet cable.

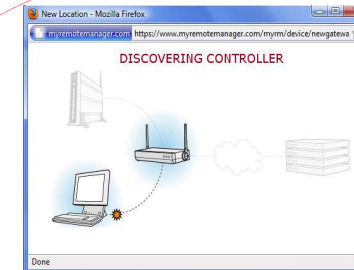
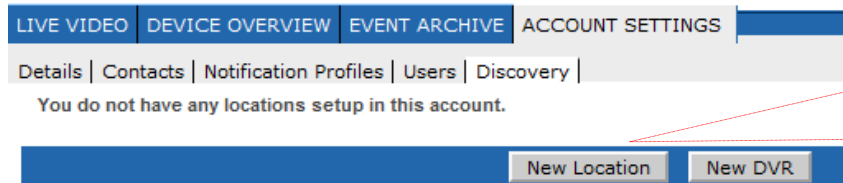
Enter your the unique **User ID** and **Temporary Password** in the proper fields and log in to your account.

Our System is a Stand Alone System and Does Not Require a computer Connected or Running After Installation

(5) Controller Registration

Once you log into your account, navigate to (A) '**ACCOUNT SETTINGS**' and click, then (B) '**DISCOVERY**' and click (C) **New Location Button** and click to register your Gateway Controller to your account.

The Controller registration Wizard will prompt you to download the plug-in needed to complete this process

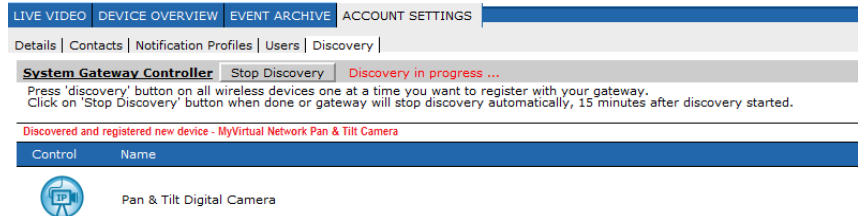


When complete click on the '**CONTINUE WITH DEVICE DISCOVERY**' link

The Discovery process should start automatically. If you don't see a message that DISCOVERY IS INITIALIZING or IN PROGRESS, press the '**START DISCOVERY**' button to start the Discovery process.

After the message changes to 'DISCOVERY IN PROGRESS...' your Cameras will automatically be discovered by your Controller.

(6) Press the '**STOP DISCOVERY**' button. Go to the **Device Overview** page and make sure that the Camera appears in the Device list.



(7) Remove the Ethernet cable from the camera and unplug the power adapter from the electrical outlet. Place the camera anywhere you would like to monitor in your apartment, home or business. Plug the power adapter into an electrical outlet and wait a few minutes for the camera to cycle to wireless mode and come back online.

To add additional wireless cameras to your system follow step (3), login with your User ID and Password Click on ACCOUNT SETTINGS, DISCOVERY, START DISCOVERY and follow steps (6), (7).

Click **FAQ? SYSTEM INFO** on our website where you can download **User Manuals** that include information on **Using Your Remote Monitoring System, Remote Monitoring System Features, Device Discovery**, and Answer's to General Questions about MyVirtual Network. **Enjoy your system!**

Copyright©2010 MyVirtual Network, L.L.C.
All rights reserved.